

2D Image-based reconstruction of shape deformation of biological structures using a variational level-set approach

Ronan Fablet, S Pujolle, A Chessel, A. Benzinou, F Cao

► **To cite this version:**

Ronan Fablet, S Pujolle, A Chessel, A. Benzinou, F Cao. 2D Image-based reconstruction of shape deformation of biological structures using a variational level-set approach. *Computer Vision and Image Understanding*, Elsevier, 2008. hal-01765015

HAL Id: hal-01765015

<https://hal-imt-atlantique.archives-ouvertes.fr/hal-01765015>

Submitted on 12 Apr 2018

HAL is a multi-disciplinary open access archive for the deposit and dissemination of scientific research documents, whether they are published or not. The documents may come from teaching and research institutions in France or abroad, or from public or private research centers.

L'archive ouverte pluridisciplinaire **HAL**, est destinée au dépôt et à la diffusion de documents scientifiques de niveau recherche, publiés ou non, émanant des établissements d'enseignement et de recherche français ou étrangers, des laboratoires publics ou privés.

2D Image-based reconstruction of shape deformation of biological structures using a variational level-set approach

R. Fablet^{1*}, S. Pujolle¹, A. Chessel¹, A. Benzinou² and F. Cao³

Ifremer/LASAA	ENIB/RESO	IRISA/VISTA
BP 70, Tecnopôle Brest-Iroise	Tecnopôle Brest-Iroise	Campus de Beaulieu
29280 Plouzane, FR	29280 Plouzane, FR	35014 Rennes, FR
{rfablet,achessel}@ifremer.fr	benzinou@enib.fr	fcao@irisa.fr

*Corresponding author (rfablet@ifremer.fr, phone: +33298224388, fax: +33298224653)

Abstract

This paper copes with the reconstruction of accretionary growth sequence from images of biological structures depicting concentric ring patterns. Accretionary growth shapes are modeled as the level-sets of a potential function. Given an image of biological structure, the reconstruction of the sequence of growth shapes is stated as a variational framework derived from geometric criteria. This variational setting exploits image-based information, in terms of the orientation field of relevant image structures, which leads to an original advection term. The resolution of this variational issue is discussed. Experiments on synthetic and real data are reported to validate the proposed approach.

1 **Keywords: shape matching, accretionary morphogenesis, level-set, inverse problem**

2 **1 Introduction and problem statement**

3 A number of biological structures, for instance corals, seashells, fish otoliths ¹, tree trunks or verte-
4 brae grow according to an accretionary process. In other words, they can be viewed as a succession
5 of three-dimensional concentric layers (with respect to an initial core). The composition of these
6 layers, in terms of crystalline organization and chemical features, vary according to endogenous and
7 exogenous factors [25]. Often, the accretionary process is associated with a periodic, mainly daily
8 or seasonal, scheme, such that the observation of these biological structures in an observation plane
9 going through the initial core depict concentric ring patterns, also called growth marks, as illus-
10 trated in Fig.1. These characteristics provide the basis for exploiting these structures as biological
11 archives to define environmental proxies (e.g., for instance to reconstruct temperature and salinity
12 sequences) [8] or to reconstruct individual life traits (e.g., individual age and growth information or
13 migration paths) [16]. To further stress the key importance of these biological structures in marine

¹Fish otoliths are calcified structures present in fish inner ears

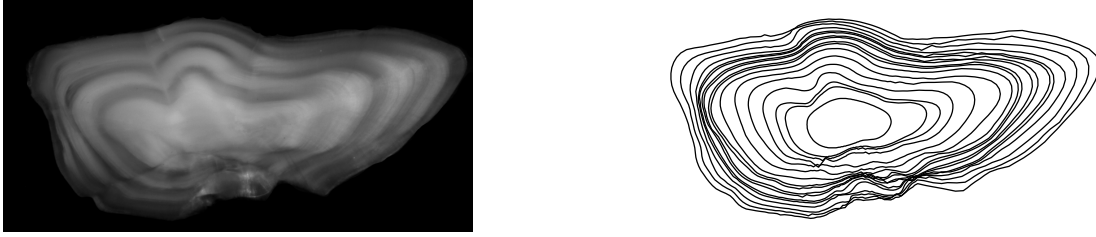


Figure 1: *Illustration of the goal of the paper: image of a pollock otolith in a given observation plane containing the growth center (left); reconstructed series of the evolved shapes (right).*

1 ecology, it can be pointed out for instance that several millions of fish otoliths are analyzed each
 2 year for fisheries management.

3 New computational tools [15, 16] are sought to improve the understanding, the modeling and the
 4 decoding of these biological archives. Their shape characteristics have been extensively exploited
 5 [4]. Though the presence of internal growth rings provide the mean for back-tracking the temporal
 6 evolution of the shape from the core to the outline, the actual analysis and reconstruction of this
 7 morphogenesis sequence have not been investigated. From an image processing perspective, the
 8 reconstruction of the morphogenesis of the considered biological structures within an observation
 9 plane² can be viewed as the reconstruction of the shape deformation from the initial circular core
 10 to the observed outline as illustrated in Fig.1. Mathematically-sound solutions [6, 30] have been
 11 proposed to determine the deformation path between any two shapes. The direct application
 12 of these schemes would however first require extracting the internal growth rings. Whereas the
 13 detection of the growth center and the detection of the external shape may be automated [5], the
 14 automated extraction of internal growth rings is a particularly complex task due to the presence of
 15 blind areas and so-called subjective contours [19, 15]. Image orientations, i.e. the local orientations

²In the subsequent, the term “observation plane” will only refer to an observation plane containing the initial core of the analyzed biological structure

1 of image structures [9], however locally convey relevant information on the shape of the growth rings,
 2 since they can be viewed as estimations of the local growth directions. Consequently, we state the
 3 reconstruction of the accretionary growth sequence as the computation of the deformation shape
 4 between the initial core and the outline such that any intermediary shape should be normal to local
 5 image orientations.

6 To this end, we adopt a level-set setting to model the accretionary growth process. Coupling
 7 a priori constraints on shape regularity and image-based information in terms of local shape orien-
 8 tation, the considered issue resorts to a variational level-set interpolation. This paper is organized
 9 as follows. Section 2 details the proposed variational framework. Minimization issue are described
 10 in Section 3. Experiments and concluding remarks are reported in Sections 4 and 5.

11 **2 Proposed approach**

12 **2.1 Level-set setting**

As suggested in the seminal work of Thompson [27], we adopt a level-set setting to represent the
 accretionary growth process. It comes to introduce a potential function U defined over \mathcal{R}^2 such
 that the shape $\Gamma_t(U)$ of the considered biological structure within a given observation plane at time
 t is given by the level set of U :

$$\Gamma_t(U) = \{p \in \mathcal{R}^2 \text{ such that } U(p) = f(t)\} \quad (1)$$

13 where f is a strictly monotonic continuous function. Given U , the sequence of level sets $\{\Gamma_t(U)\}_{[0,T]}$
 14 represents the evolution of the shape from time 0 to time T. This representation conforms to the
 15 classical assumption that accretionary growth is locally normal to the shape. The growth increment
 16 at any point p is indeed inversely proportional to $\nabla U(p)$, which is, by definition, normal in p to

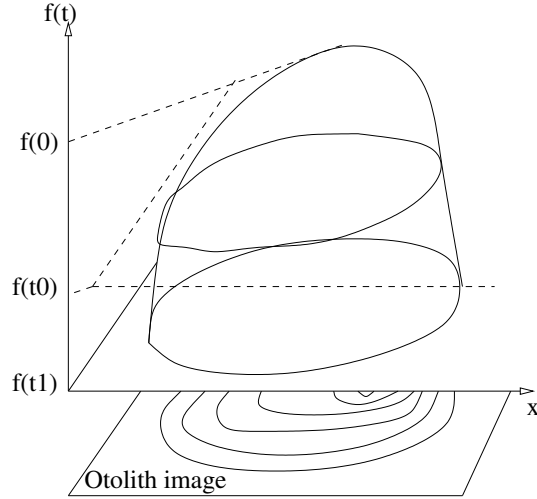


Figure 2: *Level-set representation of the accretionary growth process: the evolution of the shape is described by a potential function U , such that the growth shape at time t is given by level-line $\Gamma_t(U) = \{p \in \mathcal{R}^2 \text{ such that } U(p) = f(t)\}$ with f a continuous and strictly monotonic function.*

1 level-set $\Gamma_{U(p)}(U)$.

2 Let us stress that this level-set representation is generic. Convex as well as non-convex shapes
 3 are represented. Besides, secondary growth centers could also be taken into account, though this
 4 point is not investigated in this paper.

5 **2.2 Geometric priors and orientation-based constraints**

6 Given an image of the considered biological structure in a given observation plane, our goal is
 7 to reconstruct the potential function U associated with the underlying accretionary growth. Let
 8 us stress that the proposed level-set representation provides a relevant framework to solve for the
 9 inverse problem, since it intrinsically conveys the key geometric properties of the accretionary
 10 growth: concentricity and local parallelism of the successive level-sets. Besides, as shown below,
 11 such a representation offers a powerful tool to transform a purely geometric setting to a variational

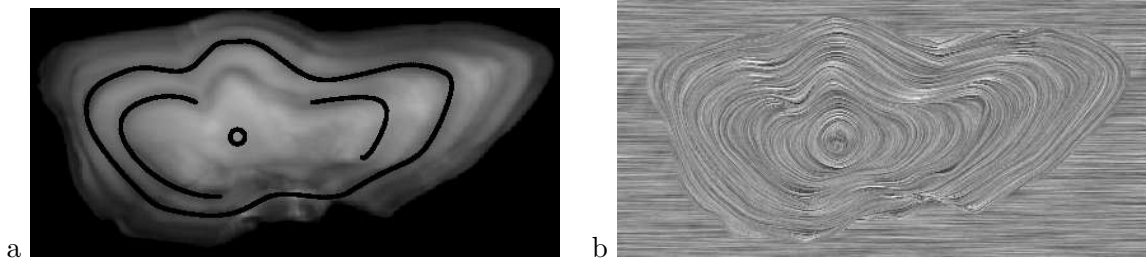


Figure 3: *Geometric priors and orientation-based information exploited to constrain the reconstruction of the accretionary morphogenesis: (a) example of boundary conditions given as a point or curve set for which potential values are known (depicted as black curve superimposed to the image of the considered biological structure), (b) example of orientation field computed from the image of the considered biological structure (the orientation field is visualized via its field line using LIC [3]).*

1 minimization issue.

2 Formally, we assume that we are given with some boundary conditions as illustrated in Fig.2.2.a:
 3 at least the shapes at times 0 and T , but additional constraints can be considered such as internal
 4 partial or complete growth rings. These conditions are stated as a set of points or curves for which
 5 the potential value is known. Let us denote by \mathcal{B} this point set and $G_{\mathcal{B}}$ the associated potential
 6 values. Solving for the reconstruction of U is then stated as the computation of its extension from
 7 \mathcal{B} to the whole domain \mathcal{R}^2 .

8 In addition, the image conveys relevant local geometric information in terms of orientations of
 9 the ring structures. Formally, we assume that an orientation field normal to local growth orienta-
 10 tions is provided as illustrated in Fig.2.2.b. The interpolation of level-set representation U is then
 11 be constrained to be locally tangent to this orientation field. A first solution consists in considering
 12 orientation field $\omega = \nabla I^\perp / |\nabla I|$ with I the image intensity. Obviously, for low gradient values, the
 13 computation of the orientation is highly noisy. However, the module of the image gradient can be

1 considered as a meaningful relevance weight [24]. Hence, a confidence map α is defined as $g(|\nabla I|)$,
 2 where g is a continuous stepwise function rescaled between 0 and 1. A second solution resorts
 3 to computing the orientation field as the AMLE (Absolutely Minimizing Lipschitz Extension) of
 4 the orientations normal to the gradient measures selected by a thresholded Canny-Deriche edge
 5 filter [9, 13]. As shown in [9], this procedure guarantees to extract smooth orientation field, which
 6 is expected to better constrain the reconstruction of the 2D morphogenesis. Let us denote by
 7 ω the provided orientation field and α the associated local confidence map. When using AMLE
 8 orientation fields, confidence map α is set to one.

Given boundary constraints $\{\mathcal{B}, G_{\mathcal{B}}\}$ and orientation constraints $\{\omega, \alpha\}$, the extension of U to the whole domain \mathcal{R}^2 is defined as the minimization of an energy criterion E :

$$\hat{U} = \arg \min_{U \in \mathcal{U}(G_{\mathcal{B}})} E(U), \quad (2)$$

where $\mathcal{U}(G_{\mathcal{B}})$ is the set of the functions from \mathcal{R}^2 to \mathcal{R} whose restriction to \mathcal{B} is $G_{\mathcal{B}}$. Energy $E(U)$ is split into two terms: a regularization term issued from a geometric shape prior and a data-driven term setting orientation-based constraints,

$$E(U) = (1 - \gamma)E_R(U) + \gamma E_O(U), \quad (3)$$

9 where γ is a weighting factor balancing the relative influence of each term.

The chosen regularity criterion resorts to minimizing the perimeter of any growth shape $\Gamma_t(U)$.

Hence, $E_R(U)$ is defined as the sum over all level-sets of the unity function:

$$E_R(U) = \int_{t \in [0, T]} \int_{p \in \Gamma_t(U)} 1 \quad (4)$$

The second energy term evaluates how the reconstructed growth shapes conform to local growth orientations ω . Any shape $\Gamma_t(U)$ is expected to be normal to orientation field ω . Given that $\Gamma_t(U)$

is a level-line of U , this is equivalent to the orthogonality between growth directions $\nabla U/|\nabla U|$ and orientations ω along $\Gamma_t(U)$. Therefore, summing over all level-lines of U , $E_O(U)$ is defined as

$$E_O(U) = \int_{t \in [0, T]} \int_{p \in \Gamma_t(U)} \alpha(p) \cdot \rho \left(\left\langle \frac{\nabla U(p)}{|\nabla U(p)|}, \omega(p) \right\rangle \right) \quad (5)$$

- 1 where ρ is an error function. In order to account for outliers, a robust function is exploited [20].
 2 Compared to a classical quadratic term, it ensures the robustness to local incoherences within
 3 orientation field w . In the subsequent, ρ is set as $\rho(x) = |x|$.

4 **2.3 Variational framework**

The above definition of the energy criterion is issued from the summation over all level-lines of U . The direct minimization of $E(U)$ from this formulation is then infeasible since it first implies to extract all level-lines of U . The solution comes from the co-area formula which supplies us with an equivalent computation over \mathcal{R}^2 . More precisely, for any function Ψ , the following result applies [21]:

$$\int_{t \in [0, T]} \int_{p \in \Gamma_t(U)} \Psi = \int_{p \in \mathcal{R}^2} |\nabla U| \Psi \quad (6)$$

- 5 Norm $|\nabla U|$, inherited from the co-area transform, can be viewed as a weight which gives more
 6 influence to points where the gradient of the level-set representation is high (conversely, where the
 7 growth is slow).

Using the formulations of energy terms $E_R(U)$ and $E_{RO}(U)$, we resort to the following variational issue:

$$\hat{U} = \arg \min_{U \in \mathcal{U}(G_B)} \int_{p \in \mathcal{R}^2} (1 - \gamma) \cdot |\nabla U| + \gamma \cdot \alpha \cdot |\langle \nabla U, \omega \rangle| \quad (7)$$

- 8 The reconstruction of the series of growth shapes can then be regarded as a variational inter-
 9 polation of the potential field U given boundary constraints G_B . The minimization to be solved

1 for involve two classical terms that are encountered in the resolution of inverse problems for two-
 2 dimensional data, for instance in image analysis [26]. The first term is as regularization term
 3 computed as a function of the norm of the image gradient. Here, we resort to the total variation
 4 criterion, widely exploited for image denoising [14, 26]. Contrarily to a quadratic criterion, the
 5 minimization of the total variation is associated to an anisotropic diffusion, better accounting for
 6 geometric image structures. The second term, often referred as the data-driven term, aims at align-
 7 ing the orientation field of U to orientation constraints ω . A similar term has been used for the
 8 reconstruction of dense orientation fields in fingerprint images within a Markovian and quadratic
 9 setting [12].

10 **2.4 Additional constraints**

11 Minimization (7) is issued from purely geometric constraints. As level-set representations are
 12 contrast invariant (*i.e.*, a contrast change does not affect the geometry of the level-sets but only
 13 the indexes of the level-sets) [22], additional constraints on U are needed to numerically solve for
 14 Eq.(7). For instance, if the boundary set is given by the growth center at time 0 and the final shape
 15 at time T , solving for Eq.(7) converges to an unstable solution constant everywhere except at the
 16 point corresponding to the growth center.

17 To account for this issue, a theoretical solution would be that the surface between two successive
 18 level-lines $\Gamma_t(U)$ and $\Gamma_{t+dt}(U)$ is constrained by the instantaneous accretionary deposit at time t .
 19 Since the actual instantaneous growth rate is generally unknown, we cannot straightforwardly
 20 exploit this constraint. However, setting constraints on the surface between successive level-lines
 21 is equivalent to setting constraints on first-order statistics $p(U)$ of U . In fact, the knowledge of the
 22 law of the accretionary deposit comes to set the form of this statistical distribution. Therefore,

1 we choose a prior on $p(U)$ to impose additional constraints on U . For the sake of simplicity, the
 2 uniform distribution has been selected in this work, but other priors might be relevant. Let us
 3 stress that changing from one prior to another simply consists in a contrast change.

Hence, the variational interpolation finally comes to solve for

$$\min_{U \in \mathcal{U}(G_B)} \int_{p \in \mathcal{R}^2} (1 - \gamma) \cdot |\nabla U| + \gamma \cdot \alpha \cdot |\langle \nabla U, \omega \rangle|, \quad (8)$$

4 subject to $p(U)$ is uniform.

5 **3 Numerical resolution**

6 To solve for the above constrained minimization, we adopt a two-step iterative approach: the first
 7 step comes to project the current solution onto the set of level-representations with uniform first-
 8 order statistics. We detail below the unconstrained minimization. To improve the convergence, a
 9 multiresolution framework is adopted.

10 **3.1 Unconstrained minimization**

To solve for the minimization of E with respect to U , Euler-Lagrange equations [1] provide the
 expression of the gradient of E . Given that the L1 norm is not derivable in zero, it is approximated
 as $\sqrt{\epsilon^2 + x^2}$. We let the reader refer to [26] for the analysis of the total variation criterion whose
 gradient is given by:

$$\frac{(\epsilon_R^2 + U_x^2)U_{xx} - 2U_y U_x U_{xy} + (\epsilon_R^2 + U_y^2)U_{yy}}{(\epsilon_R^2 + \nabla U^2)^{3/2}} \quad (9)$$

Neglecting the variations of the weight α^3 , the second term leads to the following gradient:

$$\begin{aligned}\Psi(U) &= \operatorname{div} \left(\frac{\langle \nabla U, \omega \rangle \omega}{\left(\epsilon_D^2 + \langle \nabla U, \omega \rangle^2 \right)^{1/2}} \right) \\ &= \frac{\operatorname{div}(\omega) \langle \nabla U, \omega \rangle}{\left(\epsilon_D^2 + \langle \nabla U, \omega \rangle^2 \right)^{1/2}} + \frac{\epsilon_D^2 \langle \nabla \nabla U \cdot w + \nabla \omega \cdot \nabla U, \omega \rangle}{\left(\epsilon_D^2 + \langle \nabla U, \omega \rangle^2 \right)^{3/2}}\end{aligned}\tag{10}$$

1 where div is the divergence operator, $\nabla \nabla U_p$ the Hessian matrix of U at point p , and $\nabla \omega_p$ the
2 gradient matrix $(\nabla w_{p,x}; \nabla w_{p,y})$ with $w_{p,x}$ and $w_{p,y}$ the horizontal and vertical component of ω_p .

3 The expression of $\Psi(U)$ can be compared to PDEs proposed for anisotropic image smoothing
4 which reduces to $\operatorname{div}(\langle \nabla U, \omega \rangle \omega)$ in the case of the smoothing along a single direction ω [28, 29]. The
5 first term is a weighted version of advection term $\langle \nabla U, \omega \rangle$. This advection equation corresponds
6 to the transport of a scalar quantity U preserved by a vector field ω , for instance the transport of
7 temperature by wind and currents in meteorology and oceanography. The weighting factor depends
8 on $\operatorname{div}(\omega)$. If ω is issued from the actual morphogenesis potential function, $\operatorname{div}(\omega)$ is the curvature
9 of the true (but unknown) successive growth shapes to be reconstructed.

10 The second term involved in the expression of $\Psi(U)$ is a weighted version of the diffusion
11 operator along the field lines of ω , $\omega^T \nabla \nabla U w + \omega^T \nabla \omega \nabla U$, as proposed in [28] for curvature-based
12 regularization of images. As $\sqrt{\epsilon^2 + x^2}$ is used as a numerical approximation of the L1 norm $\|x\|$,
13 $|\epsilon_D| \ll 1$. Therefore, this second term tends to be negligible.

From these considerations, the steady-state corresponding to evolution equation $dU/dt = \Psi(U)$
reduces to advection equation

$$\operatorname{div}(\omega) \langle \nabla U, \omega \rangle = 0.\tag{11}$$

³It should be stressed that this confidence map is actually exploited only with orientation fields computed from image gradients.

1 From this steady-state equation, the existence and the uniqueness (up to a contrast change) of the
2 solution of the considered inverse problem can be derived.

3 **Proposition 1** *Let ϕ be a potential function such that $\nabla\phi \neq 0$ and $\text{div}(\nabla\phi^\perp/|\nabla\phi|) \neq 0$. Let ω be*
4 *the orientation field tangent to the level-lines of Φ .*

5 *Let U be a potential function such that $\nabla U \neq 0$. U is a solution of Eq.11 if and only if it exists*
6 *a strictly monotonic continuous and derivable function g such that $U = g(\Phi)$.*

7 *Proof.* As $\omega = \nabla\phi^\perp/|\nabla\phi|$, $\text{div}(\omega) \neq 0$. Hence, Eq.11 is equivalent to $\langle \nabla U, \omega \rangle = 0$. As the
8 level-lines of a field U can be defined as the lines tangent to ∇U^\perp , the latter equation imposes
9 level-lines of U and Φ to be aligned. It then exists a continuous and derivable function g such that
10 $U = g(\Phi)$. Given that $\nabla U \neq 0$ and $\nabla\phi \neq 0$, g is strictly monotonic.

11 Reciprocally, potential function $U = g(\Phi)$, with g a strictly monotonic continuous and derivable
12 function, is a solution of Eq.11 \square .

This proposition guarantees that, if direction field ω is the direction field of an unknown potential function, the solutions of Eq.11 are transformed versions of this unknown potential function with respect to a contrast change. Note also that this is only valid for a domain on which $\text{div}(\nabla\phi^\perp/|\nabla\phi|) \neq 0$. Assuming that only isolated points do not fulfill this condition, this results can be extended to the whole domain by continuity. Condition $\text{div}(\nabla\phi^\perp/|\nabla\phi|) \neq 0$ indeed resorts to considering that the curvature of the level-lines is not null. Formally, such an assumption seems reasonable for the studied biological phenomena: they rather involve round or elliptic growth shapes and the formation of growth shapes involving perfect straight lines seems unlikely. From a numerical point of view, numerical unstabilities have however been observed in practice when using directly the gradient-descent issued from Euler-Lagrange equations. These numerical unstabilities may be due to weighting factor $\text{div}(\omega)$ since growth shapes far from the growth center tend to

become locally closer to straight lines. Consequently, to ensure a better numerical resolution, we prefer exploiting an explicit Gauss-Seidel scheme. Given that Eq.11 does not lead to a linear system, the Gauss-Seidel scheme is derived from the discrete version of the considered variational criterion. Considering a finite difference approximations of $|\nabla U|$ similar to Markovian setting [17, 23], we resort to:

$$(1 - \gamma) \sum_{(p,q) \in \mathcal{N}} \rho_{\epsilon_R}(U_p - U_q) + \gamma \sum_{p \in \mathcal{R}^2} \alpha_p \cdot \rho_{\epsilon_D}(\langle \nabla U_p, \omega_p \rangle), \quad (12)$$

where \mathcal{N} is the four-neighborhood system and (i.e., the neighborhood of a point is given its four western, northern, eastern and southern neighbors in the image). The minimization of the discrete energy involving robust functions is carried out using an iterated reweighted least square (IRLS) scheme, which iterates two steps: the computation of robust weights

$$\beta_R(p, q) = \phi_R(U_p - U_q) \quad (13)$$

and

$$\beta_D(p) = \phi_D(\langle \nabla U_p, \omega_p \rangle), \quad (14)$$

where function ϕ is the influence function associated with robust estimator ρ computed as $\phi(x) = \rho'(x)/x$ (these robust weights are low for high residual error, i.e. outliers, and high for low residuals); and solving for the weighted least square minimization

$$\min_{U \in \mathcal{U}(G_B)} (1 - \gamma) \sum_{(p,q) \in \mathcal{N}} \beta_R(p, q) \cdot |U_p - U_q|^2 + \gamma \sum_{p \in \mathcal{R}^2} \alpha_p \cdot \beta_D(p) \cdot \langle \nabla U_p, \omega_p \rangle^2 \quad (15)$$

- 1 given robust weight maps β_R and β_D . This least square estimation is indeed solved for using a
- 2 Gauss-Seidel scheme. U_p is iteratively updated by explicitly solving for the quadratic minimization
- 3 (15) under the assumption that U is constant except at point p . The associated computations
- 4 based on a centered numerical approximation of ∇U_p are detailed in Annex.

3.2 Reprojection onto the constrained subspace

The projection of the current solution U onto the set of level-set representation with uniform first-order statistics can be viewed as an histogram equalization. As histogram equalization can be implemented as a PDE scheme [6], constrained minimization (8) could be solved by coupling the PDE issued from the gradient of E to the one proposed in [6]. However, as stressed above, such a PDE-based scheme is numerically unstable and a discrete Gauss-Seidel minimization scheme is preferred. The histogram equalization is applied as a second step after the Gauss-Seidel loop. Given \tilde{U} , the distribution of the potential values $p(\tilde{U})$ is computed as well as their cumulative distribution $F(\tilde{U})$. Aligning $F(\tilde{U})$ to line $y = x$ provides us with a contrast change approximately leading to a uniform distribution $p(U)$. As stressed previously, this transformation does not modify the geometry of the level lines but only their relative potential values.

3.3 Multiresolution minimization

Minimization (7) is obviously not convex. To ensure a better robustness to the initialization, a multiresolution scheme is used. Given a Gaussian pyramid of the orientation field ω [2], the multiresolution approach comes to solve for the estimation of the potential function U at successive resolutions, from the coarsest resolution to the finest one. The final estimate at a given resolution serves as the initialization at the next resolution. In practice, Gaussian pyramids with four levels were exploited.

3.4 Initialization

The computation of a relevant initialization to the proposed gradient-based multiresolution scheme is important to ensure a fast and relevant convergence. The initialization is delivered by the

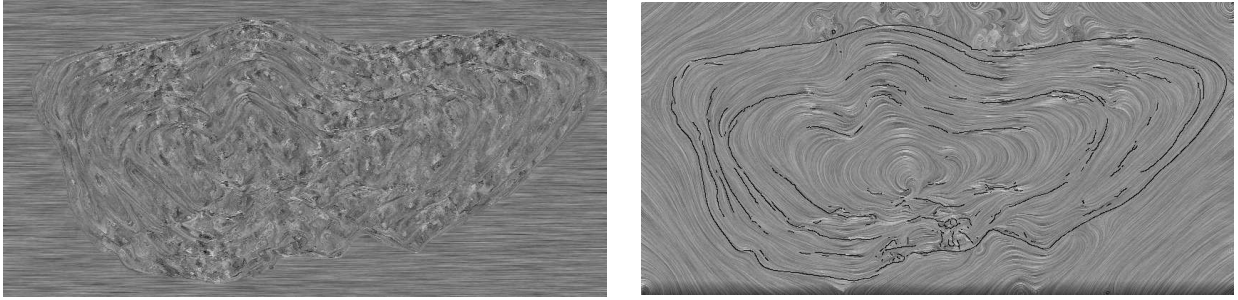


Figure 4: *Examples of extracted growth orientation fields from local image orientations for the image of a pollock (Pollachius pollachius) otolith depicted in Fig.1: visualization of the orientation field issued from the image gradient (left), visualization of the orientation field computed as the AMLE (Absolutely Minimizing Lipschitz Extension) of automatically selected gradient measures depicted by black lines (right). Orientation fields are visualized via their field lines using LIC) [3].*

1 scalar AMLE (Absolutely Minimizing Lipschitz Extension) of the boundary conditions to the whole
 2 domain [7]. Since the AMLE resorts to the minimization of the L_∞ norm, the AMLE can be viewed
 3 as the less smooth interpolation operator among all smooth interpolation operator. The AMLE is
 4 implemented as gradient descent $\partial U / \partial t = U_{\nabla \nabla}$ where $U_{\nabla \nabla}$ is the second-order derivative in the
 5 direction of the gradient of U . It is shown to converge to the unique AMLE. The key properties
 6 of the AMLE is that it is an artifact-free and oscillation-free interpolant actually capable of taking
 7 into account isolated boundary points as well as curves.

8 4 Results

9 4.1 Extraction of the orientation fields

10 The proposed approach initially relies on the extraction of orientation field ω . As detailed previ-
 11 ously, orientation field $\omega = \nabla I / |\nabla I|$ computed from the image gradient ∇I is first investigated. The
 12 second solution comes to computing ω as the AMLE of the orientations of the gradient measures

1 selected by a thresholded Canny-Deriche edge filter [9, 13]. Fig. 4 reports the orientation fields
 2 issued from these two schemes for the image depicted in Fig.1. These orientation fields are visual-
 3 ized via their field lines, using Line Integral Convolution (LIC) [3]. As expected, orientation field
 4 $\omega = \nabla I / |\nabla I|$ is not globally coherent and only orientation information along image contours may
 5 be meaningful. On the contrary, the AMLE orientation field is much smoother. It conveys relevant
 6 geometric cues, which are expected to better constrain the reconstruction of the 2D morphogenesis.

7 4.2 Examples of reconstruction of the series of growth shapes

8 To illustrate the different steps of our approach, we first display the reconstruction of the series
 9 of growth shape for the pollock otolith image previously depicted in Fig.1. The results of the
 10 reconstructions of the morphogenesis associated with the orientation fields issued from the image
 11 gradient and the AMLE scheme are compared in Fig. 5. Besides, reconstructions issued for two
 12 different configurations of boundary constraints G_B : the first example only involves the position of
 13 the growth center, whereas the growth center as well as the first translucent ring is given in the
 14 second example. Parameters γ , ϵ_R and ϵ_D are respectively set to 0.6, 0.1 and 0.1 for the first case
 15 and to 0.9, 0.1 and 0.1 for the latter. Equally sampled level lines $\{\Gamma_t(U)\}$ superimposed to the
 16 otolith image are reported. Due to the weaker coherence of the gradient-based orientation field,
 17 the minimization of the variational criterion does not lead to very regular level lines in that case.
 18 If only the growth center is provided, such orientation information is not sufficient to reconstruct
 19 relevant growth shapes, especially for the first two rings. The additional boundary constraint given
 20 as the first bright ring permits to greatly improve the reconstruction of the series of growth shape.
 21 The results issued from the AMLE orientation field clearly depict more regular shapes which fit
 22 to the internal otolith structures. In addition, the two boundary constraints lead to very similar

1 results: few differences can be observed and mainly occur in the ventral lobe (left part) of the first
2 translucent ring. Concerning computational time, the proposed scheme is implemented as a C code
3 under linux and runs in about half a minute for a 500x1000 image.

4 To further illustrate the role of the two energy terms involved in the proposed variational
5 formulation, results are reported for the two configurations processed in Fig.6 and Fig.7 setting γ
6 to 0 and 1. If only the regularization term is exploited, the reconstruction of the shapes only relies
7 on the geometric prior set in terms of shape regularity and can be viewed as a shape matching
8 example [6, 30]. Such prior does not however permit to reconstruct relevant shape deformations
9 if only the growth center and the otolith outline is provided. The quality of the reconstruction
10 clearly improves if additional boundary constraints are added. While results reported using the
11 AMLE orientation field appear very similar for $\gamma = 1$ (Fig.7) and $\gamma = 0.9$ (Fig.5). It is however
12 preferable to impose some minimum regularity (i.e., $\gamma < 1$) in order to deal with potential local
13 incoherences of the AMLE orientation field. This is indeed further illustrated when the gradient
14 orientation-field are used, since the minimization of the variational criterion with $\gamma = 1$ does not
15 lead to a meaningful configuration even if the first translucent ring is provided (Fig.7). Practically,
16 a trade-off has to be achieved between regularity and conformity to the orientation field.

17 With a view to further investigating this aspect, experiments are carried out for synthetic data.
18 The synthetic image is created as follows. For the otolith image depicted in Fig.1, the boundary
19 constraints defined by the set of all translucent rings were exploited to extract a sequence of otolith
20 shapes using only the regularization term (i.e., $\gamma = 0$). The values of potential function U are
21 then converted to intensity using a modulated sinusoidal mapping to generate an image depicting
22 a sequence of dark and bright rings. This image is corrupted by a centered Gaussian noise with
23 a standard deviation of 10. This test image is associated with a reference potential function U_{GT}

1 which can be used as a reference for performing a quantitative evaluation. Such a quantitative
2 evaluation is reported in Fig.8. Both the performances of the variational setting combined to
3 gradient-based and AMLE orientation fields were evaluated as a function of the weighting factor γ .
4 These results further stress that the AMLE scheme is more robust and more stable. As confirmed
5 empirically for real images, γ values between $[0.8, 1[$ correspond to the best trade-off between
6 regularity and conformity to orientation data.

7 To further illustrate the flexibility of the proposed scheme, an example of reconstruction of the
8 growth shapes is carried out using additional constraints given as annotated segments of an internal
9 ring (Fig. 9). This example demonstrates the capability of the proposed variational scheme to take
10 such constraints into account in order to improve the reconstruction of the shapes compared to the
11 results reported above.

12 Experiments for three other fish species, namely plaice (*Pleuronectes platessa*), cod (*Gadhus*
13 *morua*) and hake (*Merluccius merluccius*), as well as the section of a tree trunk, are presented in
14 Fig.10) and Fig.11). Obviously, better results are recovered for the plaice otolith and the section
15 of a tree trunk, which involves the clearest structure. The results reported for the whiting (*Gadhus*
16 *morua*) and cod (*Merlangius merlangus*) otoliths demonstrate that we are also capable of approx-
17 imately recovering the complex and non-uniform evolution of such shapes from lower-contrasted
18 images.

19 **5 Discussion**

20 We have proposed a scheme aimed at reconstructing from an image the evolution of the shape of
21 biological structures involving accretionary growth process. Its key feature is a level-set representa-
22 tion, which intrinsically accounts for the major characteristics of the accretionary growth process.

1 From purely geometric criteria on shape regularity and on local orientation coherence with respect
2 to the observed image, a variational formulation is derived. The associated minimization is effi-
3 ciently solved for within a discrete robust multiresolution framework. Reported results on synthetic
4 and real data provides a validation of the proposed approach. In particular, it demonstrates that
5 AMLE orientation fields should be preferred to the orientation of image gradient since it conveys
6 more relevant geometric information on image structures than image gradients.

7 Future work will investigate several refinements and extensions of the present work. Whereas
8 uniformity constraints set to the distribution of potential function U are exploited to solve for
9 minimization (7), other constraints more closely related to growth dynamics (for instance, a mean
10 growth model) might also be exploited. New regularization term $E_R(U)$ may also be developed
11 to encode a priori knowledge on shape statistics, for instance using an exemplar-based setting
12 [11]. 3D morphogenesis reconstruction may also be investigated as an extension of this work
13 from the joint analysis of several observation planes. This contribution also provides the basis for
14 the development of improved pre-processing (for instance, orientation-based image filtering) and
15 information extraction (growth axis, growth rings) tools [10] for the considered biological images.
16 In the field of marine ecology, new issues can also be investigated in terms of understanding and
17 modeling of biocalcification and accretionary growth process.

18 **References**

- 19 [1] G. Aubert and P. Kornprobst. *Mathematical problems in image processing*. Springer-Verlag,
20 New York, USA, 2002.
- 21 [2] P.J. Burt. *The pyramid as a structure for efficient computation*. Springer-Verlag, 1984. In

- 1 A.Rosenfeld, éditeur, pages 6-35.
- 2 [3] B. Cabral and L.C. Leedom. Imaging vector field using line integral convolution. *Computer*
3 *Graphics Proceedings*, pages 263–270, 1993.
- 4 [4] S. Campana and J. Casselman. Stock discrimination using otolith shape analysis. *Can. Jal of*
5 *Fish. Res. and Aqu. Sc.*, 50:1062–1083, 1993.
- 6 [5] F. Cao and R. Fablet. Automatic morphological detection of otolith nucleus. *Pattern Recog-*
7 *niton Letters*, 2006.
- 8 [6] V. Caselles, , and G. Sapiro. Histogram modification via partial differential equations. *J. Diff.*
9 *Equations*, 135:238–268, 1997.
- 10 [7] V. Caselles, J.-M. Morel, and C. Sbert. An axiomatic approach to image interpolation. *IEEE*
11 *Trans. on Image Processing*, 7:376–386, 1998.
- 12 [8] L. Chauvaud. The shell of the Great Scallop *Pecten maximus* as a tool for high frequency
13 paleoenvironmental reconstruction. *Geochemistry, Geophysics, Geosystems* 6, 2004. In press.
- 14 [9] A. Chessel, F. Cao, and R. Fablet. Interpolation of orientation: an axiomatic approach. In
15 *Proc. of European Conference on Computer Vision, ECCV06*, Graz, May 2006.
- 16 [10] A. Chessel, R. Fablet, and F. Cao and C. Kervrann. Orientation interpolation and applications.
17 In *Proc. of 13th Int. Conf. on Image Processing, ICIP'2006*, Atlanta, October 2006.
- 18 [11] D. Cremers and C. Schnörr. Statistical shape knowledge in variational motion segmentation.
19 *Image and Vision Computing*, 21(1):77–86, 2003.

- 1 [12] S. Dass. Markov random field models for directional field and singularity extraction in finger-
2 print images. *IEEE Trans. on Image Processing*, 13(10):1358–1367, 2004.
- 3 [13] R. Deriche. Using canny’s criteria to derive a recursively implemented optimal edge detector.
4 *International Journal of Computer Vision*, 1(2):167–187, 1987.
- 5 [14] S. Durand and J. Froment. Reconstruction of wavelet coefficients using total variation mini-
6 mization. *SIAM Jal Scientific Computing*, 24(5):1754–1767, 2003.
- 7 [15] R. Fablet. Semi-local extraction of ring structures in images of biological hard tissues: appli-
8 cation to the bayesian interpretation of fish otoliths for age and growth estimation. *Canadian*
9 *Journal on Fisheries and Aquatic Sciences*, 43(6):1414–1428, 2006.
- 10 [16] R. Fablet and F. Daverat and H. de Pontual. Unsupervised bayesian reconstruction of individual
11 life histories chronologies from otolith signatures: case study of Sr:Ca transects of eel (*anguilla*
12 *anguilla*) otoliths. *Can. Jal of Fish. Res. and Aqu. Sc.*, 2006. Submitted.
- 13 [17] S. Geman and D. Geman. Stochastic relaxation, Gibbs distribution and the Bayesian restora-
14 tion of images. *IEEE Trans. on Pattern Analysis and Machine Intelligence*, 6(6):721–741,
15 1984.
- 16 [18] R. Gonzalez and R. Woods. *Digital image procesing*. Addison-Wesley Publishing Company,
17 1992.
- 18 [19] A. Guillaud, A. Benzinou, H. Troadec, V. Rodin, and J. Le Bihan. Autonomous agents for edge
19 detection and continuity perception on otolith images. *Im. and Vis. Comp.*, 20(13-14):955–968,
20 2002.
- 21 [20] P. Huber. *Robust Statistics*. John Wiley & Sons, 1981.

- 1 [21] F. Lin and X. Yang. *Geometric Measure Theory: An Introduction*. International Press, 2002.
- 2 [22] P. Monasse and F. Guichard. Fast computation of a contrast invariant representation. *IEEE*
3 *Trans. on Image Processing*, 9(5):860–872, 2000.
- 4 [23] E. Mémin and P. Pérez. A multigrid approach for hierarchical motion estimation. In *Proc. of*
5 *6th IEEE Int. Conf. on Computer Vision, ICCV'98*, pages 933–938, Bombay, Jan. 1998.
- 6 [24] J.M. Odobez and P. Bouthemy. Separation of moving regions from background in an image se-
7 quence acquired with a mobile camera. In *Video Data Compression for Multimedia Computing*,
8 chapter 8, pages 295–311. H. H. Li, S. Sun, and H. Derin, eds, Kluwer, 1997.
- 9 [25] J. Panfili, H. De Pontual, H. Troadec, and P.J. Wright. *Manual of Fish Sclerochronology*.
10 Editions Ifremer, 2003.
- 11 [26] L. Rudin, S. Osher, and E. Fatemi. Nonlinear total variation based noise removal algorithms.
12 *Physica D*, 60(1-4):259–268, 1992.
- 13 [27] D. W. Thompson. *On growth and form*. Cambridge University Press, 1917.
- 14 [28] D. Tschumperlé. Fast anisotropic smoothing of multi-valued images using curvature-preserving
15 PDE's. *International Journal of Computer Vision*, 0(0):xx–xx, 2006.
- 16 [29] J. Weickert. *Anisotropic diffusion in image processing*. Teubner-Verlag, Stuttgart, 1998.
- 17 [30] L. Younès. Optimal matching between shapes via elastic deformations. *Image and Vision*
18 *Computing*, 17:381–389, 1999.

1 Appendix: potential update

The local update of potential U at point p to solve for Eq.15 relies on a centered gradient approximation and is computed as:

$$U_p = \frac{(1 - \gamma) \sum_{q \in \mathcal{N}_p} \beta_R(p, q) \cdot U_q + \gamma \sum_{q \in \mathcal{N}_p^H} \beta_D(q) \omega_{q,x} \langle A_{p,q}, \omega_q \rangle + \gamma \sum_{q \in \mathcal{N}_p^V} \beta_D(q) \omega_{q,y} \langle B_{p,q}, \omega_q \rangle}{(1 - \gamma) \sum_{q \in \mathcal{N}_p} \beta_R(p, q) + \gamma \sum_{q \in \mathcal{N}_p^H} \beta_D(q) \omega_{q,x}^2 + \gamma \sum_{q \in \mathcal{N}_p^V} \beta_D(q) \omega_{q,y}^2} \quad (16)$$

2 where \mathcal{N}_p comprises the four neighbors of p , \mathcal{N}_p^H its two horizontal neighbors and \mathcal{N}_p^V its two
3 vertical ones. $\omega_{q,x}$ and $\omega_{q,y}$ are respectively the horizontal and vertical component of vector ω_q .
4 Vector $A_{p,q}$ for point $p = (i, j)$ and its horizontal neighbor $q = (i, j + k)$, $k = \mp 1$, is defined as
5 $\left(U_{i,j+2k}, (-1)^{\frac{k+1}{2}} (U_{i+1,j+k} - U_{i-1,j+k}) \right)^t$. Similarly, vector $B_{p,q}$ for point $p = (i, j)$ and its vertical
6 neighbor $q = (i + k, j)$, $k = \mp 1$, is defined as $\left(U_{i,j+2k}, (-1)^{\frac{k+1}{2}} (U_{i+1,j+k} - U_{i-1,j+k}) \right)^t$.

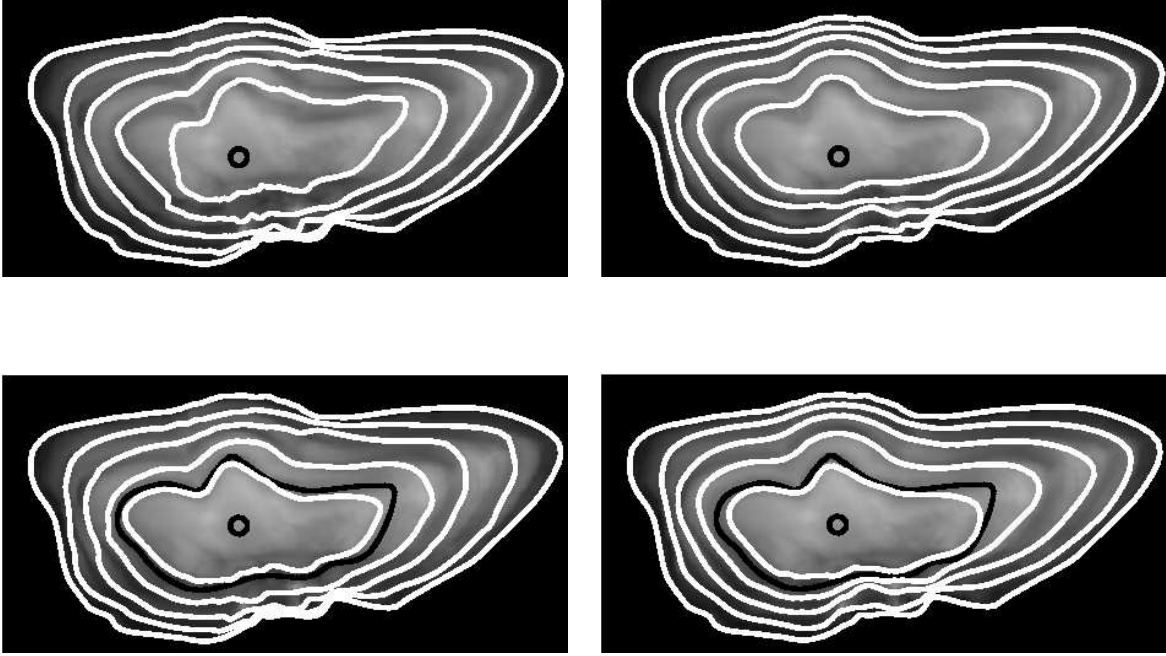


Figure 5: *Reconstruction of the series of growth shapes for the pollock (*Pollachius pollachius*) otolith image depicted above: first row, reconstruction given the otolith center using the gradient-based (left) and AMLE (right) orientation fields; second row, reconstruction given the otolith center and the first opaque ring using the gradient-based (left) and AMLE (right) orientation field. Parameter ϵ is set to 0.1. The constraints (i.e., the otolith center and the first opaque ring) are superimposed to the otolith image as black curves, and the equally sampled level sets of the reconstructed potential function U as white curves.*

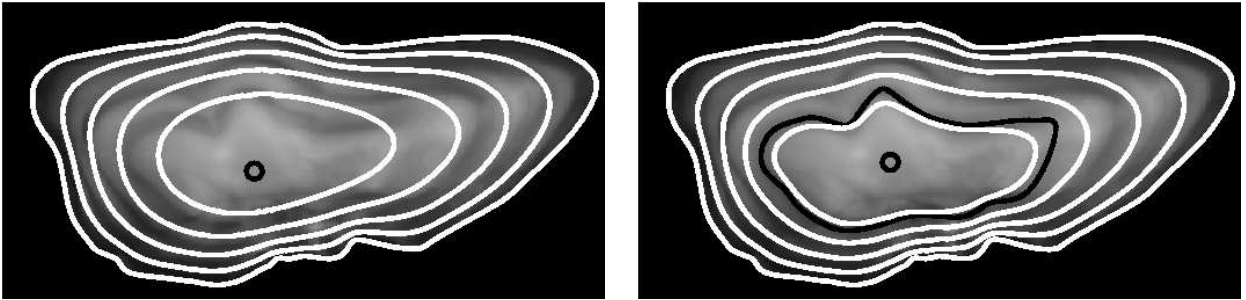


Figure 6: *Reconstruction of the series of growth shapes for the pollock (*Pollachius pollachius*) otolith image depicted above setting γ to 0 (i.e., using only the regularization term): left, given the otolith center; right, given the otolith center and the first opaque ring. In both cases, the constraints (i.e., the otolith center and the first opaque ring) are superimposed to the otolith image as black curves, and the equally sampled level sets of the reconstructed potential function U as white curves.*

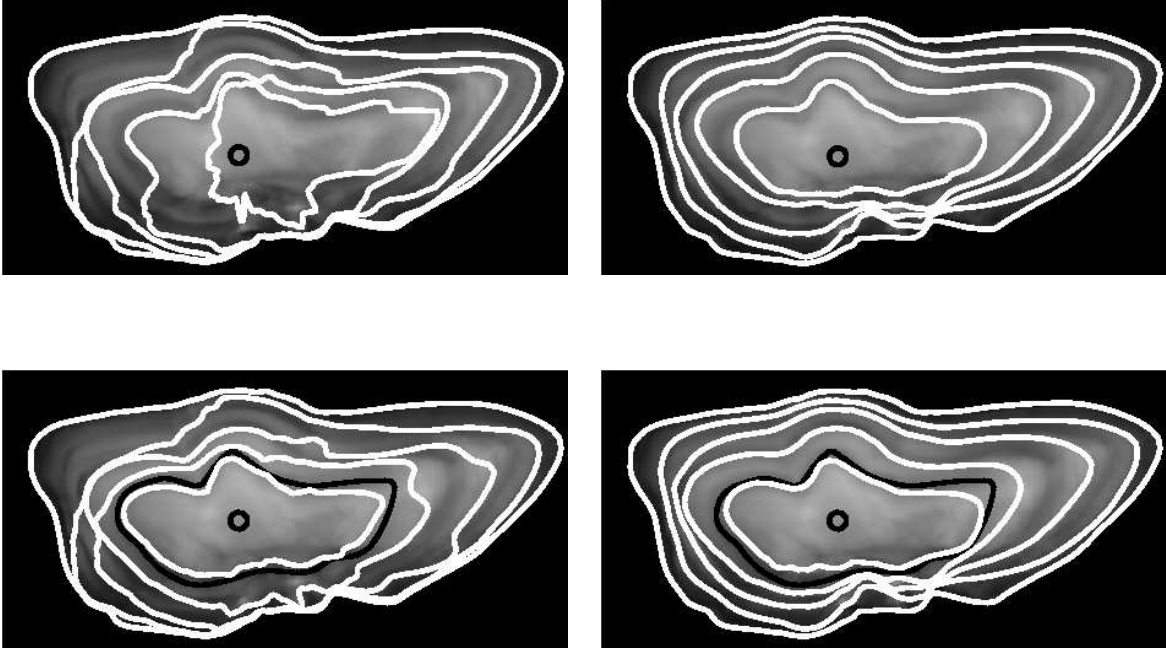


Figure 7: *Reconstruction of the series of growth shapes for the pollock (*Pollachius pollachius*) otolith image depicted above setting γ to 1 (i.e., using only the data-driven term): first row, results are obtained knowing the position of the growth center using the gradient-based (left) and AMLE (right) orientation fields; second row, reconstruction knowing the otolith center and the first opaque ring using the gradient-based (left) and AMLE (right) orientation field. Parameter ϵ is set to 0.1 and weighting factor. The constraints (i.e., the otolith center and the first opaque ring) are superimposed to the otolith image as black curves, and the equally sampled level sets of the reconstructed potential function U as white curves.*

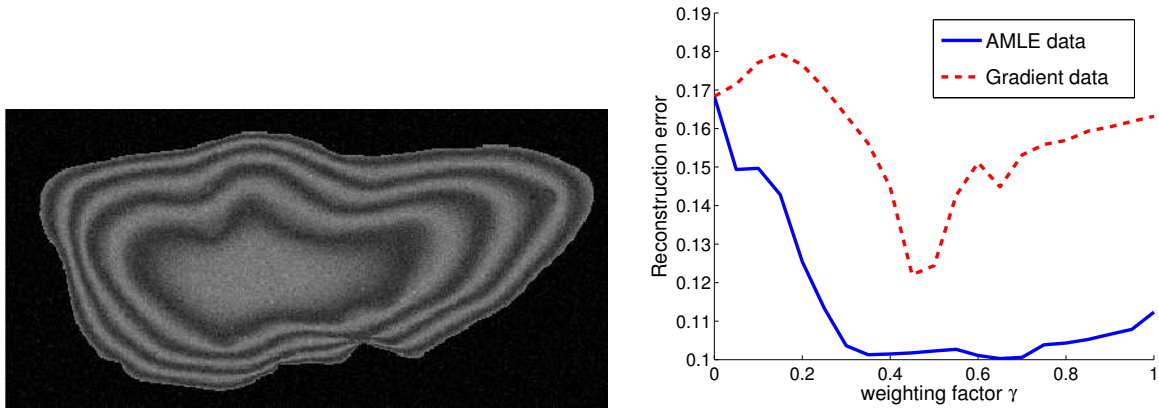


Figure 8: *Influence of the weighting factor γ on the reconstruction error for a synthetic otolith image: left, noisy synthetic otolith image; right, reconstruction error using gradient-based and AMLE orientation field as a function of the weighting factor γ .*

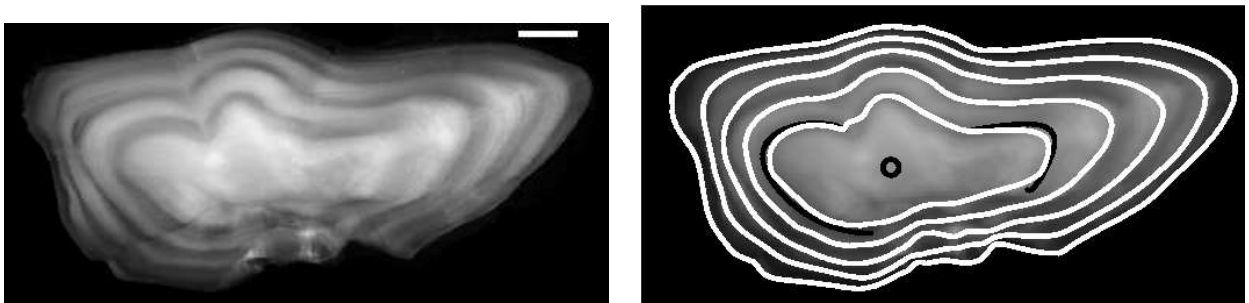


Figure 9: *Reconstruction of the series of growth shapes for the pollock (*Pollachius pollachius*) otolith processed for boundary constraints given by the position of the growth center and two segments of the first opaque ring: original image (left), series of shape superposed to the otolith image (right column). These experiments have been carried out using the AMLE orientation field to compute the data-driven term. Boundary constraints are depicted as black curves in the images.*

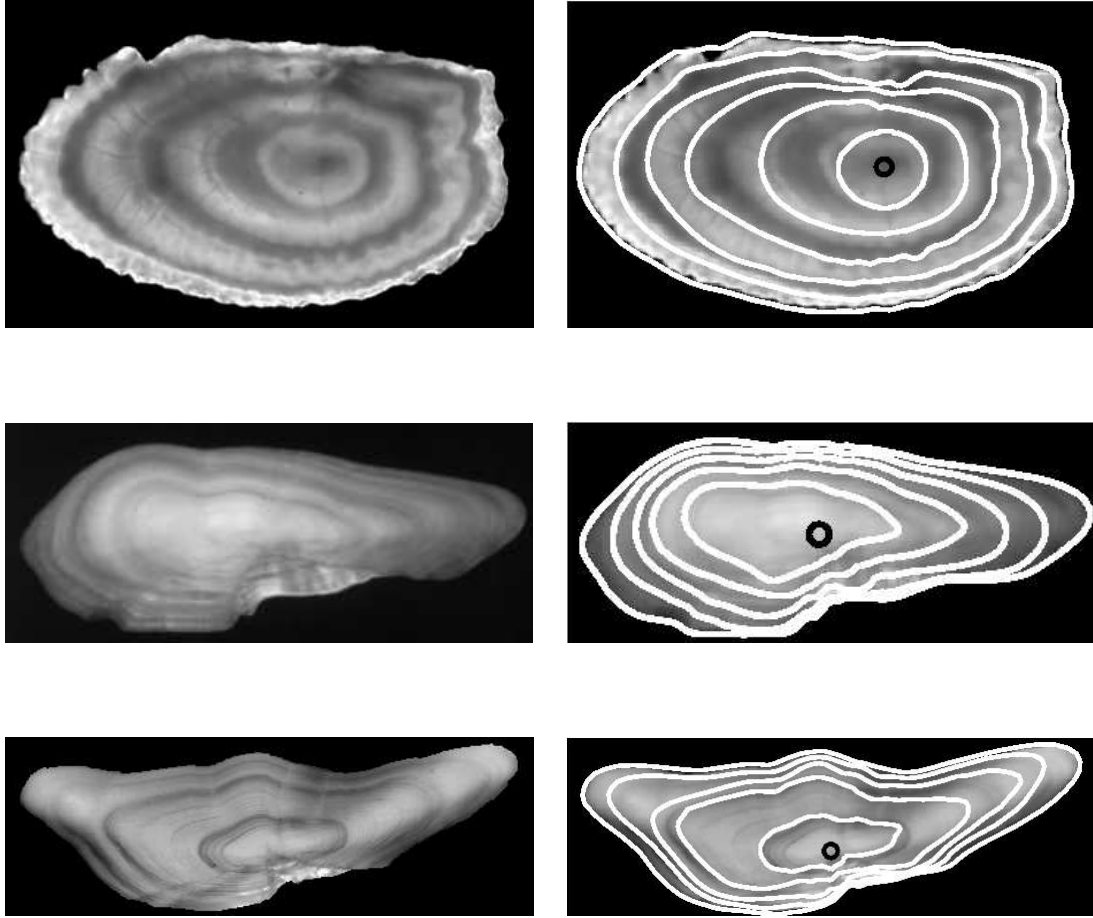


Figure 10: *Reconstruction of the series of growth shapes for three examples of fish otoliths: a plaice (*Pleuronectes platessa*) otolith (first row), a cod (*Gadhus morua*) otolith (second row), and a whiting (*Merlangius merlangus*) otolith (third row. For each row, the otolith image and the series of shape superposed to the otolith image are reported. The same parameter setting as in the previous experiments is used.*

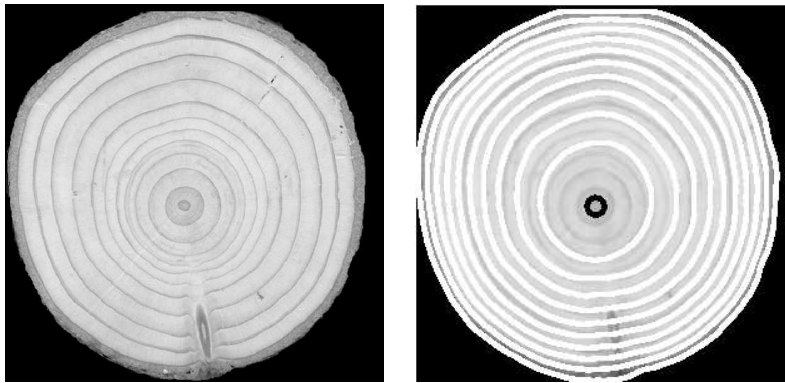


Figure 11: Reconstruction of the series of growth shapes of the section of a tree trunk: original image (left), reconstructed potential function U (left column), series of shape superposed to the image of the section of the tree trunk (right column). These experiments have been carried out using the AMLE orientation field to compute the data-driven term. The growth center is depicted as a black circle.